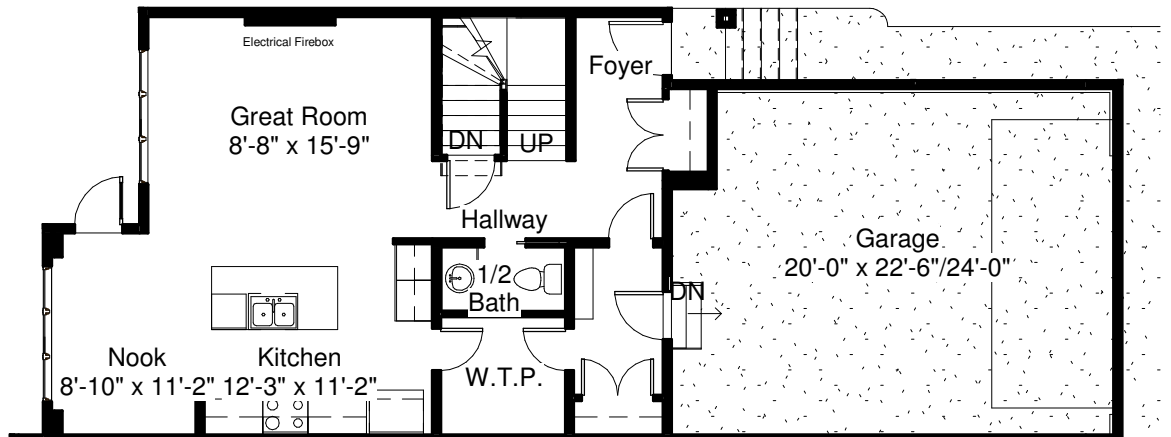


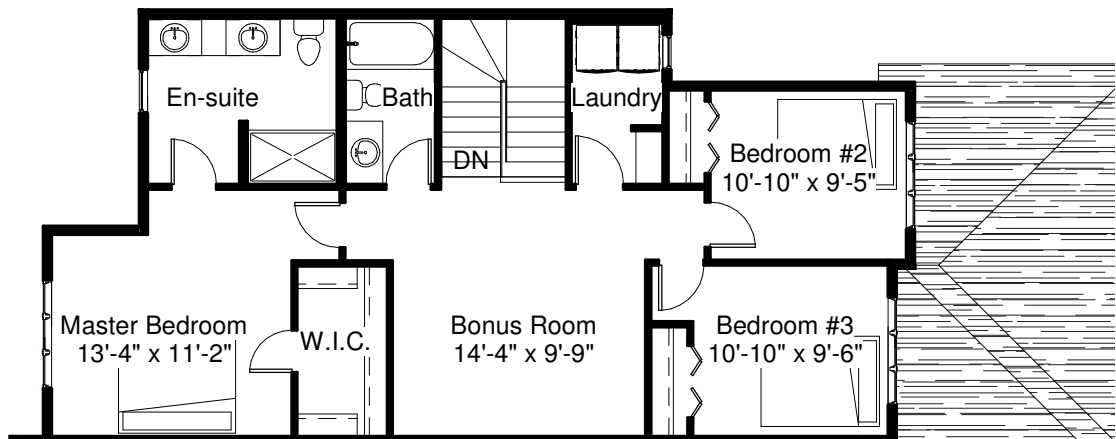


## **Morrison - Job 955**

24'-0" Pocket	
Main Floor	786 sq. ft.
Second Floor	966 sq. ft.
Total	1752 sq. ft.



Main Floor Plan 786 SQFT  
 9'-1" Main Floor Ceiling



Second Floor Plan 966 SQFT  
 8'-1" Second Floor Ceiling

