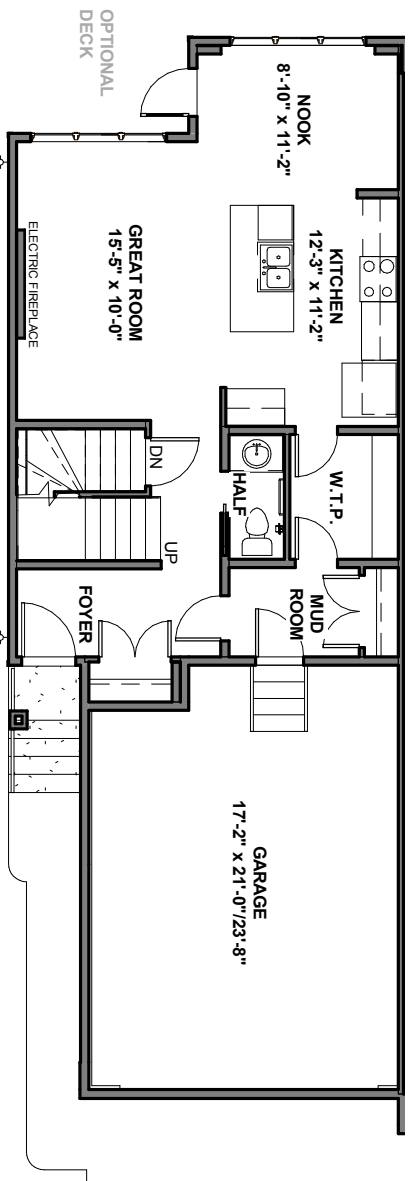


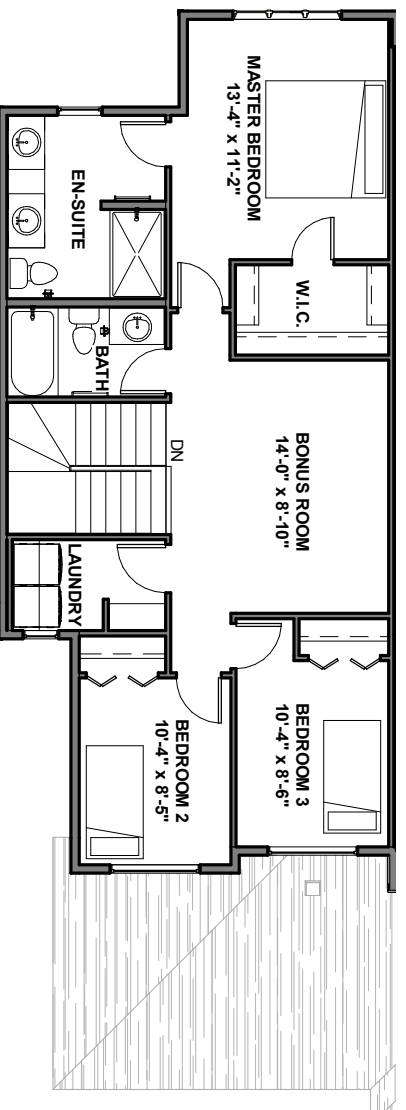


MORRISON - JOB 974

22'-0" POCKET	
MAIN FLOOR	727 SQ. FT.
SECOND FLOOR	873 SQ. FT.
TOTAL	1600 SQ. FT.



MAIN FLOOR 727 SQ.FT.
9'-1" CEILING HEIGHT



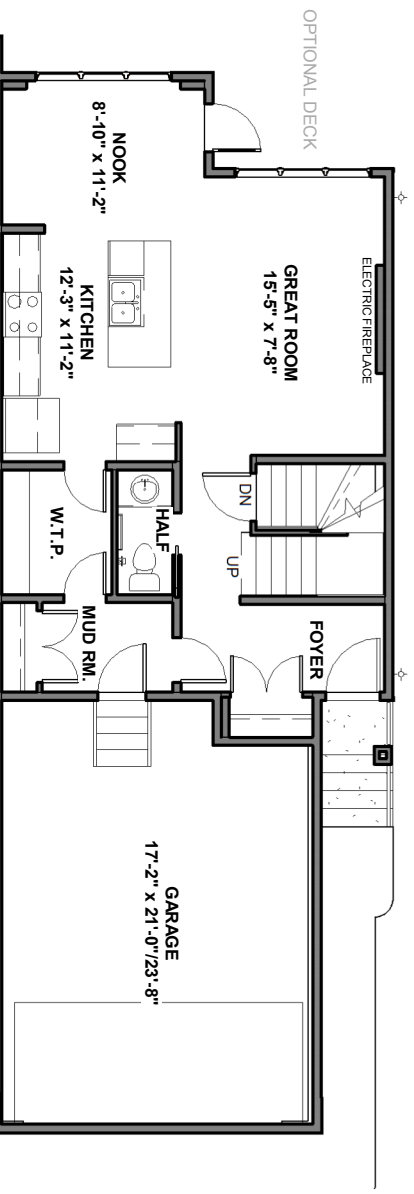
SECOND FLOOR 873 SQ.FT.
8'-1" CEILING HEIGHT



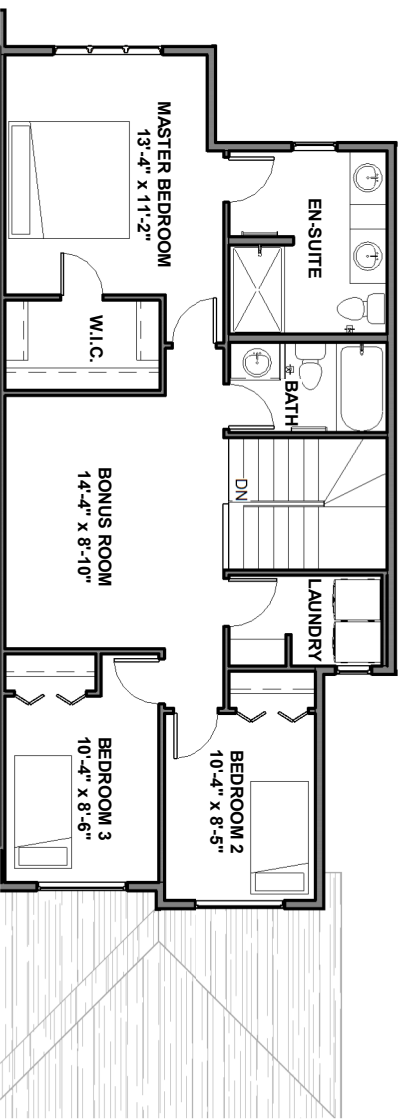


MORRISON - JOB 973

22'-0" POCKET	
MAIN FLOOR	727 SQ. FT.
SECOND FLOOR	873 SQ. FT.
TOTAL	1600 SQ. FT.



MAIN FLOOR 727 SQ. FT.
9'-1" CEILING HEIGHT



SECOND FLOOR 873 SQ. FT.
8'-1" CEILING HEIGHT

